

Drinking water system Zip HydroTap® G4 CS



Application areas

Drinking water supply for:

- > Domestic kitchens
- > Public areas
- > Offices
- > Cafeterias / bistros
- > Restaurants / hotels




Drinking water system

Zip HydroTap® G4 CS

Product information



chilled + sparkling >   **G4 CS 175**

Part number:	4100-44282
Number of users:	< 50
Water connection (thread connection):	G ½" or G ¾" *
Rated pressure [bar]:	2.5 – 7.0
Chilled water temperature [°C]:	5 – 10
Chilled water capacity [glasses ¹⁾ / h]:	175
Standby power consumption [kWh / 24h]:	0.21
Nominal power at voltage 1~/N/PE 230 V AC [kW]:	0.45  with plug
Compact undersink unit [colour]:	white
Tap [surface material]:	chrome
Protection class:	IP 20
Weight (filled) [kg]:	20
Dimensions height x width x depth [cm]:	33.5 x 34.0 x 47.6

* Connection hose G ½" with supplied adapter G ¾" 1) Standard glass with 200 ml

Description

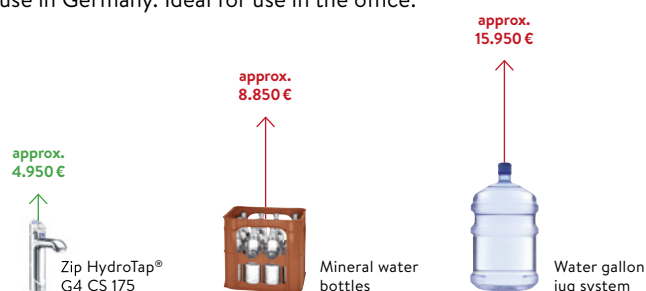
- > Undersink drinking water system, dispenses filtered chilled still or sparkling drinking water from a single tap
- > Electronic dispensing tap with lever operation, function indicators
- > Touch display for menu navigation and for activating the energy saving modus as well as temperature setting of the water
- > Locking position of the levers for convenient filling without holding
- > Electronic temperature control
- > Easy-to-replace sub-micron particle filter cartridge with activated carbon filter, filters hazardous substances > 0.2 micron and improves the taste of water
- > Leakage protection system

Note on carbonation function ^{H) SH)}

The CO₂ bottle for producing sparkling water is not included in the scope of supply. This is obtainable from retail outlets or specialist gas dealers. Pressure reducers are available for either SodaClub CO₂ bottles or standard commercial CO₂ bottles with W 21.8 x 1/14 RH thread.

Profitability comparison (Source: Internet comparison, 18.11.12)

The comparison shows the total costs of the various systems including purchase, energy and maintenance costs over 5 years of use in Germany. Ideal for use in the office.



Calculation basis

Number of users:	15 persons
Number of days in use:	230 working days per year
Usage:	0.9 litres / person and day
Drinking water costs:	4 € per 1.000 litres
Mineral water bottles:	570 € per 1.000 litres
Water gallon jugs:	950 € per 1.000 litres

H) Note: the total quantity of sparkling water depends on the CO₂ bottle used. The carbon dioxide content is a maximum of 5 g per litre, corresponding to medium sparkling water.

SH) Safety note: It must be ensured that an uncontrolled escape of CO₂ gas cannot build up to a hazardous level. There must be a minimum room space of 6.8 square metres per 1 kg CO₂ with a ceiling height of 2.5 m.

Drinking water system

Zip HydroTap® G4 CS

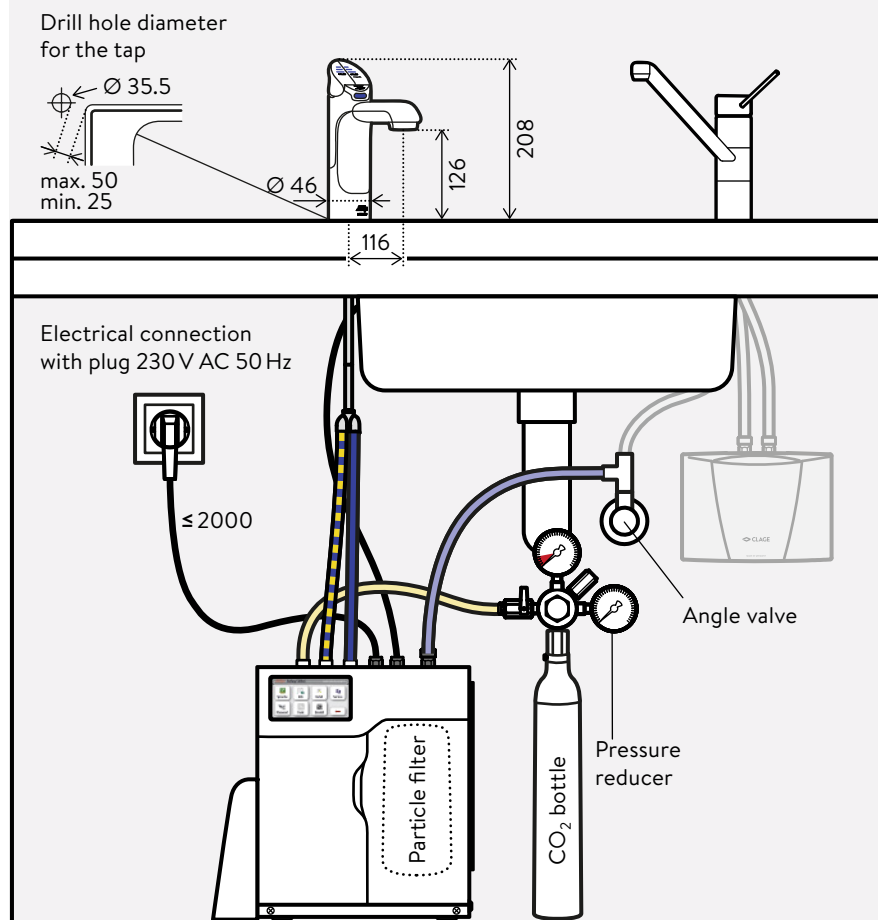
Installation



Daily user requirements and the available space in the cabinet below the special tap should be considered when selecting the appropriate model.

Measurements in mm

Assembly and operating instructions must be observed upon installation.



Installation at the kitchen sink



Installation as stand-alone unit
with drainage front and extension KXTV.



Drinking water system

Zip HydroTap® G4 CS

Accessories



KXF 2.1 (included)

Sub-micron particle filter cartridge filters contaminants > 0.2 microns and additionally improves the taste of the water. **For Zip HydroTap® G4 models since 02.2017.**

KXF 2.1: Part no. 893702



DMBCS

Pressure reducer with standard CO₂ connecting thread (½ inch), gas cylinders can be obtained via specialist gas suppliers

DMBCS: Part no. 4100-44120



DMSP

Pressure reducer with Soda Club connecting thread

DMSP: Part no. 4100-44125

COF (only available for dispatch within Germany)

CO₂ gas cylinder for Soda Club connecting thread

COF: Part no. 9910-90005



KXB-C (optional)

Plastic installation kit for G4 CS175, allows for easier installation of ventilation in the base cabinet. Dimensions (H × W × D): 4.0 × 49.5 × 50.0 cm.

KXB-C: Part no. 893541

Drinking water system

Zip HydroTap® G4 CS

Accessories



KXV (optional)

The optional chrome extension allows for raising the electronic dispensing tap by 10.7 cm.

Polished chrome (standard)

KXV10: Part no. 4100-44102



KXTV (optional)

The optional stainless steel font with drainage connection and chrome extension allows for flexible installation of the electronic dispensing tap at any location away from the sink.

Polished chrome (standard)

KXTV10: Part no. 4100-44111



DTK (optional)

The digital temperature controller for Zip devices is used to keep the temperature in the cupboard under 35°C when normal ventilation is not sufficient. The digital controller operates independently of the undersink unit and will require a separate 230 V socket.

DTK: Part no. 893159